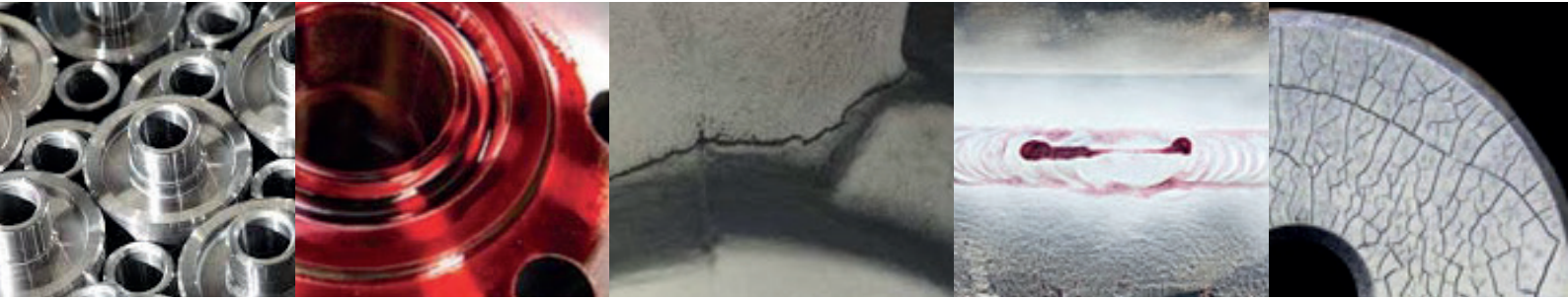




Non-Destructive Testing



Top quality Non-Destructive Testing Products for reliable defect detection. Designed for Industry.

Hochwertige Zerstörungsfreie Prüfprodukte zur zuverlässigen Fehlererkennung.

Konzipiert für die Industrie.

Des produits de test non destructifs de qualité supérieure pour une détection de défauts fiables. Conçu pour l'industrie.



ECS GmbH

Storkower Strasse 113, D-10407 Berlin, Germany

info@ecsag.com • www.ecsag.com • ☎ 0049 30 364 640 36



CLEANER CL-1

CL-1 has been formulated to provide a clean surface to allow the best quality of indication in daylight inspection. Designed to be used in sequence with ECS Red Dye Penetrant (RD-2) and ECS Developer (DE-3).

Description: Solvent cleaner.

Applications: Castings, forgings, weld inspection, metal fabrication, railways, power generation components and pipelines.

Composition: Low odour, low aromatic hydrocarbon based solvent.

Specification Compliance: AMS 2644, ASME B & PV Sec V, ASTM E165/E165M, ASTM E1417/E1417M, EN ISO 3452-1, EN ISO 3452-2, MIL-STD-2132D, Mil-STD-271F



RED DYE RD-2

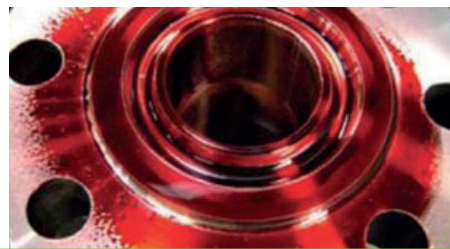
RD-2 has been formulated using a high quality red dye which, together with other ingredients, provides the best quality of indication in daylight inspection. Designed to be used in sequence with ECS Cleaner (CL-1) and ECS Developer (DE-3).

Description: Oil based, solvent removable, brightly visible red dye penetrant.

Applications: Castings, forgings, weld inspection, metal fabrication, railways, power generation components and pipelines.

Composition: A blend of petroleum distillates, plasticizer and an oil soluble organic red dye.

Specification Compliance: AMS 2644, ASME B & PV Sec V, ASTM E165/E165M, ASTM E1417/E1417M, EN ISO 3452-1, EN ISO 3452-2 (Level 2), MIL-STD-2132D, Mil-STD-271F



DEVELOPER DE-3

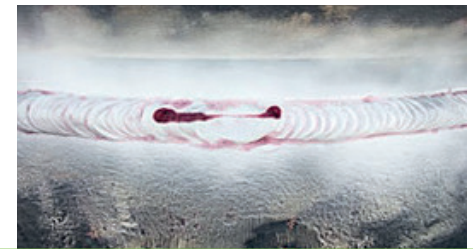
DE-3 has been formulated, using a combination of high quality ingredients, to provide a clear indication in daylight inspection. Designed to be used in sequence with ECS Cleaner (CL-1) and ECS Red Dye Penetrant (RD-2).

Description: Non aqueous suspended developer.

Applications: Castings, forgings, weld inspection, metal fabrication, railways, power generation components and pipelines.

Composition: Solvent based mobile white liquid suspension.

Specification Compliance: AMS 2644, ASME B & PV Sec V, ASTM E165/E165M, ASTM E1417/E1417M, EN ISO 3452-1, EN ISO 3452-2, MIL-STD-2132D, Mil-STD-271F, SAFRAN Pr 5000 / In 5000



WHITE PAINT WP-1

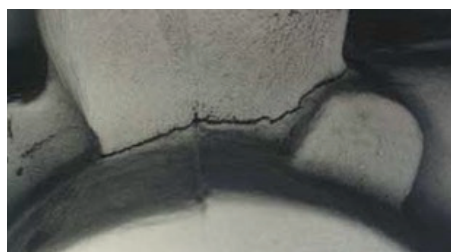
WP-1 has been formulated using high quality ingredients to provide the best quality of indication in daylight inspection. Provides a thin uniform bright white surface coating to ensure easy visibility of Black Ink (BI-2) during magnetic particle inspection.

Description: Ready to use, rapidly drying, white contrast paint.

Applications: Castings, forgings, weld inspection, metal fabrication, railways, power generation components and pipelines.

Composition: Inert organic pigments and an acrylic binder in a solvent blend based on acetone.

Specification Compliance: ASME B & PV Code Sec V, ASTM E709, EN ISO 9934-1, EN ISO 9934-2, GOST R ISO 9934-2-2011



BLACK INK BI-2

BI-2 has been formulated using high quality uniformly sized magnetic particles suspended in a formulated carrier fluid to provide the best quality of indication in daylight inspection. Clearly visible in daylight when used with our White Paint (WP-1) for color contrast.

Description: Wet method, oil based, ready to use, daylight visible ink.

Applications: Castings, forgings, weld inspection, metal fabrication, railways, power generation components and pipelines.

Composition: A suspension of magnetic particles in a high-flash petroleum distillate.

Specification Compliance: AMS 2641, AMS 3041, ASM 3043 (Aerosol), ASME B & PV Code Sec V, ASTM E709, ASTM E1444/E1444M, EN ISO 9934-2, GOST R ISO 9934-2-2011, MIL-STD-2132D

